

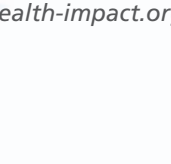
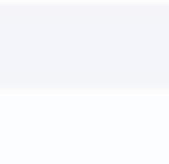
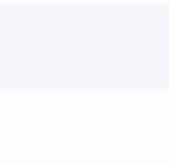
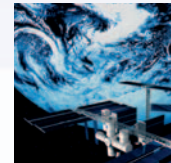
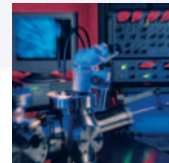
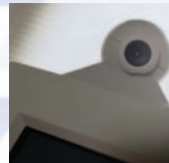
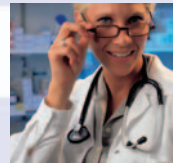
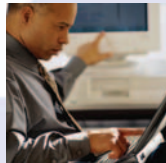
Ten Site Studies

The eHealth IMPACT study is evaluating 10 eHealth sites across Europe. These are operating with proven, sustainable eHealth applications.

The sites have been selected by using the following criteria:

- Use of operational, routine and effective eHealth at the point of care or at the health system level
- Availability of basic economic and productivity data or the agreement to develop and estimate these
- Commitment of the organisation and its management to participate
- Representativeness of the regional or national health system diversity of the European Union

If you are aware of an ongoing, well-established eHealth application, which may qualify for inclusion in the case study collection, please get in touch with the coordinator or visit www.ehealth-impact.org/case_studies/index_en.htm, to fill in the case study template



Commissioned by
European Commission
DG Information Society & Media



Co-ordinated by



Gesellschaft für Kommunikations- und
Technologieforschung mbH, Bonn, Germany
eMail: ehealth-impact@empirica.com
Tel: +49 (2 28) 9 85 30-0
www.ehealth-impact.org

In partnership with

TanJent Consultancy, UK
Kadris, France
Jagellonian University, Poland
TJP Consulting, UK



European Commission Study on
Economic Impact of eHealth

www.ehealth-impact.org

Developing and applying a context-adaptive
method of evaluation for eHealth

The Challenge

Despite the current availability of many eHealth systems and services, they are not yet widely used in providing routine health care.

One reason is that very little reliable, empirical evidence is available on their longer-term, sustainable impacts.

"It is impossible to assess the extent to which telemedicine represents a sensible priority for health investment."

(British Medical Journal 324 [15 June, 2002] 1437.)

eHealth services have many implications for the whole process of healthcare, but the economic impact has not yet been properly addressed.

In this eHealth IMPACT study we focus on three major dimensions of economic and productivity issues:

- improved access for citizens
- better quality of care
- increased cost efficiency.



The Objectives

By the end of 2005 the eHealth IMPACT team will answer this challenge by:

- developing an evaluation method for eHealth - information and communications technology-based applications - that focuses on optimising resource allocation in routine health care delivery
- identifying about 100 examples of good practice in eHealth. These will be proven cases that show sustainable improved outcomes, increased efficiency and - where available - a positive benefit/cost ratio
- applying the method and measurement tools developed at 10 flagship eHealth sites across the European Union
- developing an online tool and handbook that will make a simplified version of the method available to support all those who are taking eHealth decisions.
- elaborating a vision for a future European Impact Assessment System for eHealth



The Evaluation Method

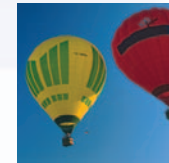
The starting point for each detailed eHealth impact case study is an economic impact model that has been developed by the research team. It uses information about:

- patients' costs and benefits
- healthcare providers' or system actors' costs and benefits
- use of eHealth.

It covers three time-periods:

- service or application development
- implementation
- routine use.

To develop an easily usable measurement tool, the team is testing the method at two lead sites. With the support



of site staff, the method is being improved before being applied at the remaining 8 sites. A refined economic impact model will then be made available for general use.